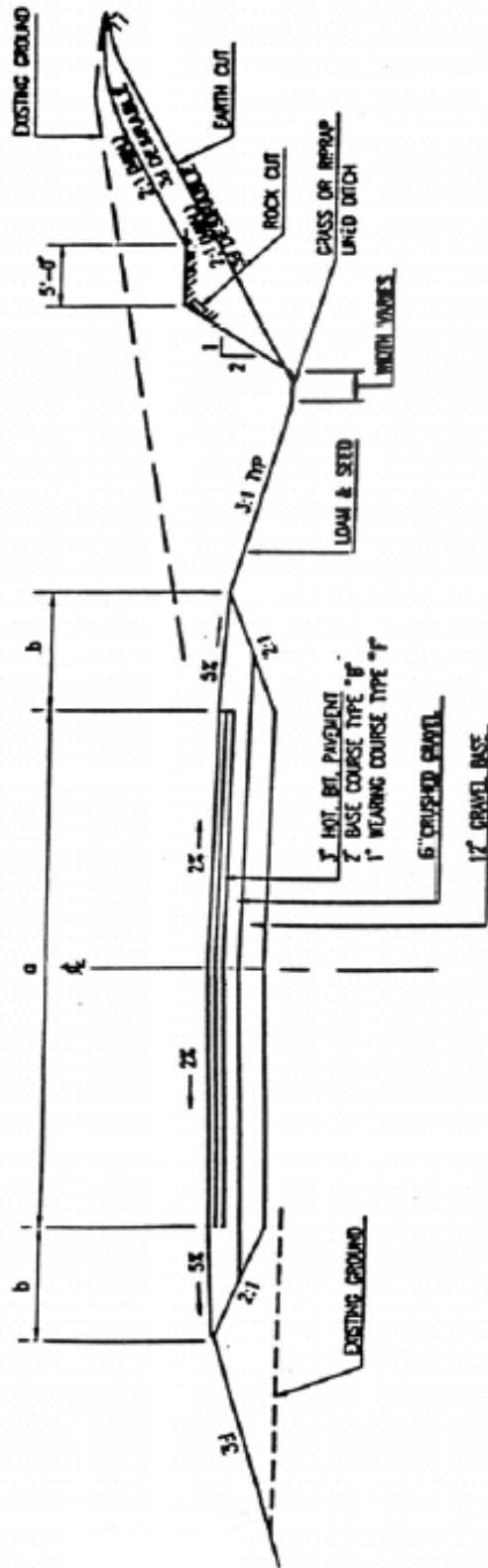


TOWN OF SHELBURNE – TYPICAL ROAD DESIGN STANDARDS FOR NEW DEVELOPMENTS



SEE TABLE I FOR a AND b DIMENSIONS
 a = ROADWAY WIDTH
 b = SHOULDER WIDTH

**TYPICAL SECTION
 PAVED ROADS**
 NOT TO SCALE

EXHIBIT 1

TOWN OF SHELBURNE – TYPICAL ROAD DESIGN STANDARDS FOR NEW DEVELOPMENTS

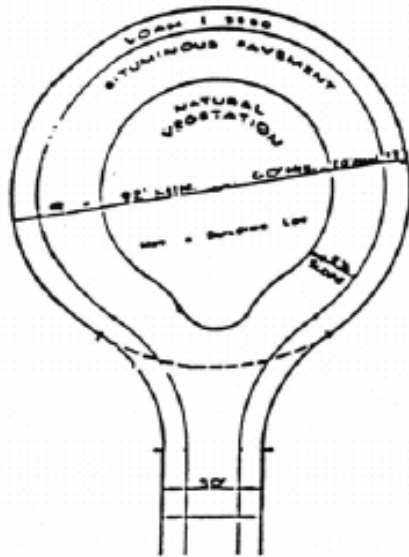


EXHIBIT 2A
CIRCULAR WITH ISLAND

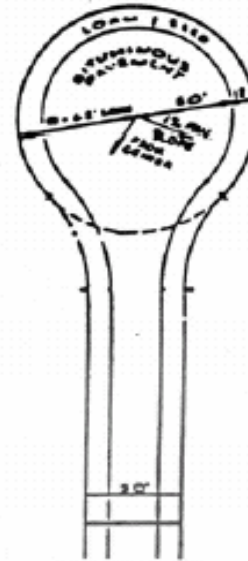


EXHIBIT 2B
CIRCULAR PAVED

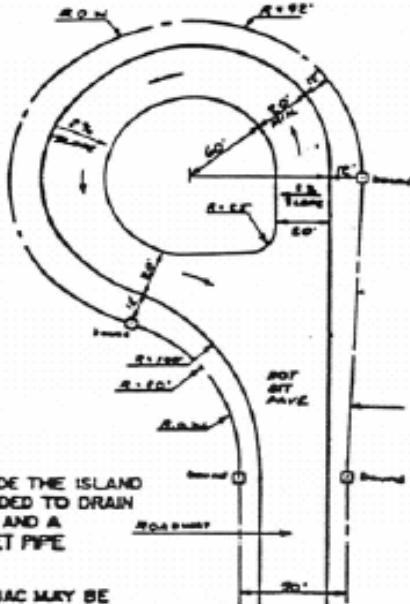


EXHIBIT 2D
"REVERSE P" DESIGN

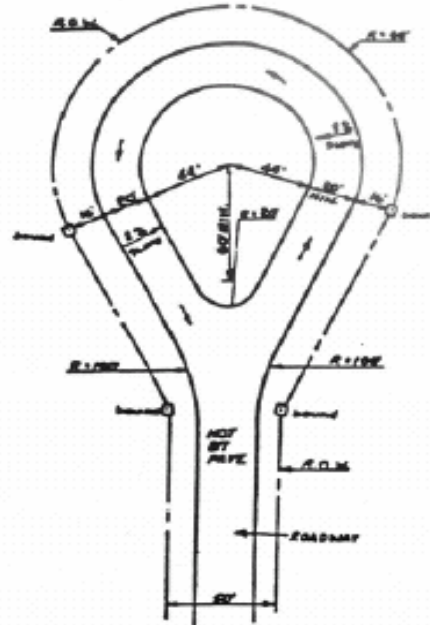


EXHIBIT 2C
"TEAR DROP" DESIGN

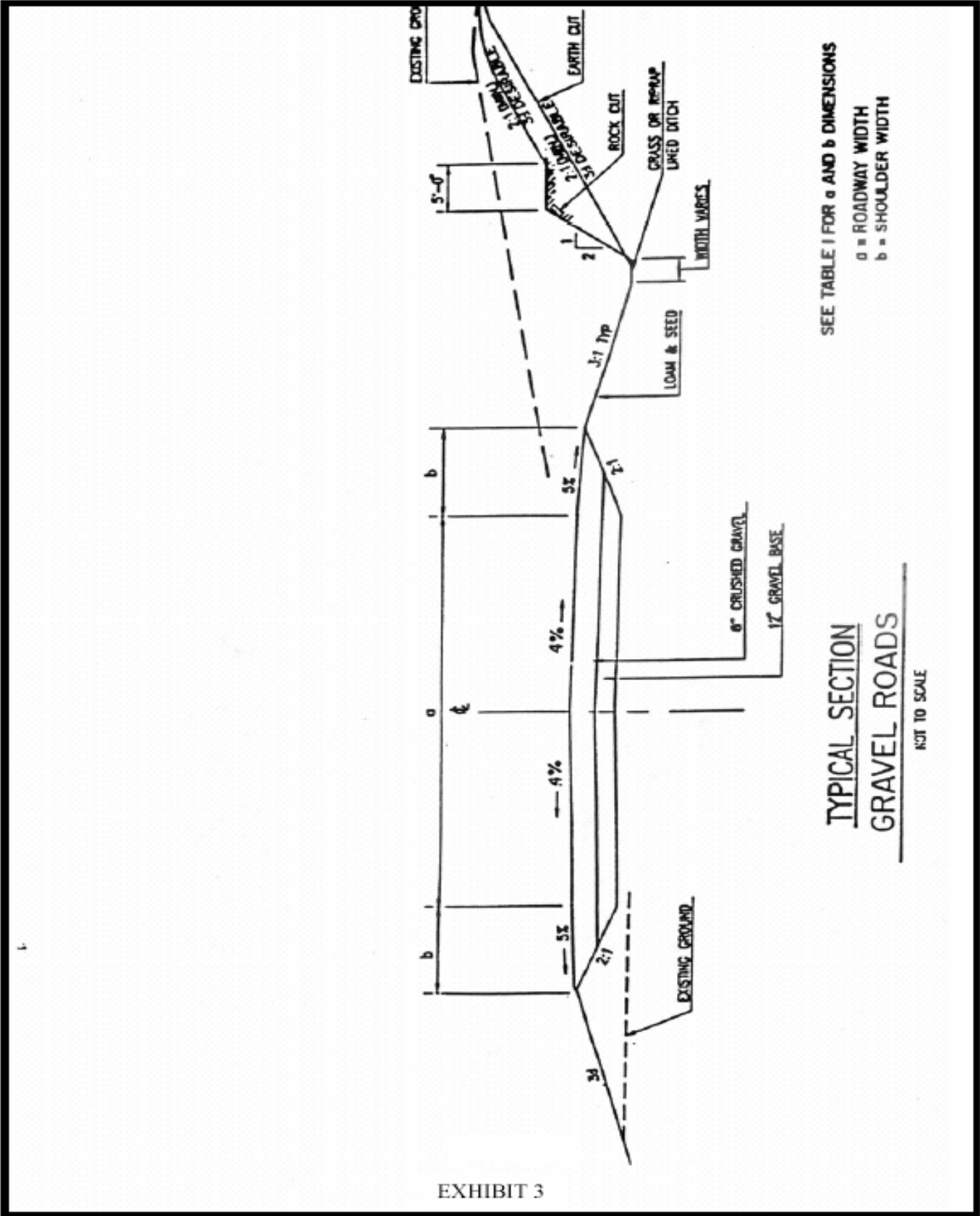
NOTES:

1. THE AREA INSIDE THE ISLAND SHALL BE GRADED TO DRAIN TO THE INSIDE AND A PROPER OUTLET PIPE PROVIDED.

2. THE CUL-DE-SAC MAY BE CONSTRUCTED LARGER THAN SHOWN HERE WITH THE APPROVAL OF THE PLANNING BOARD OR ITS AGENT. THE PAVEMENT WIDTHS SHOWN SHALL NOT BE REDUCED

CUL - DE - SAC

TOWN OF SHELBURNE – TYPICAL ROAD DESIGN STANDARDS FOR NEW DEVELOPMENTS

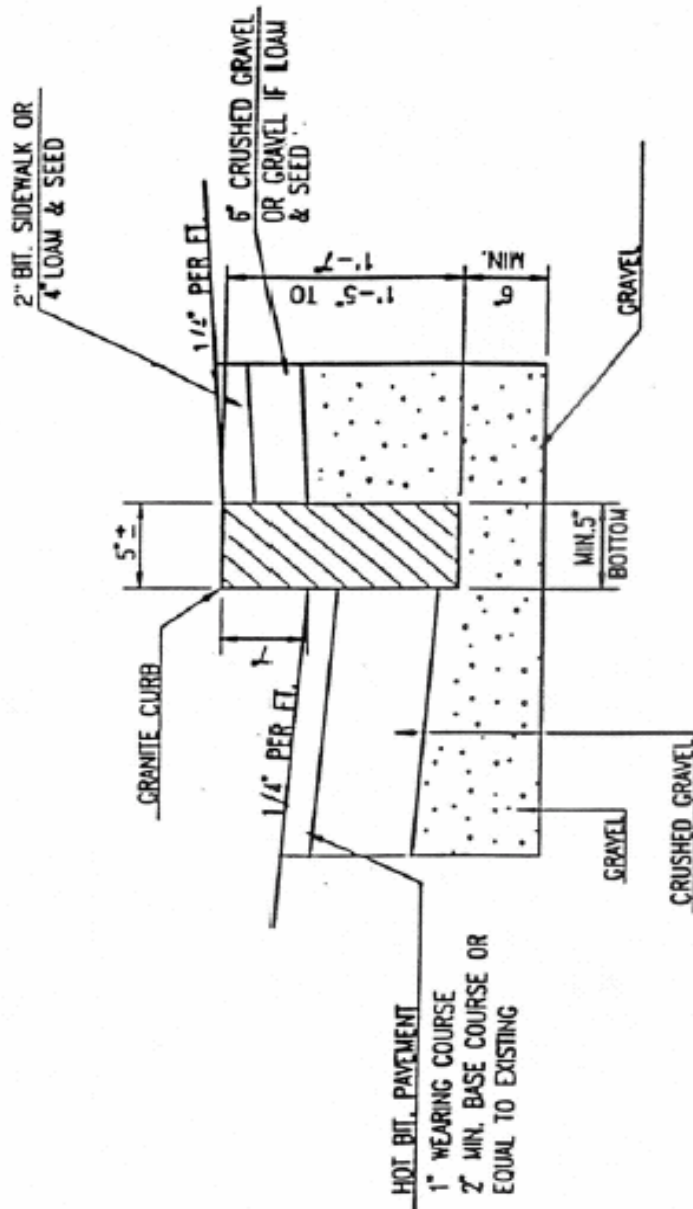


SEE TABLE I FOR a AND b DIMENSIONS
 a = ROADWAY WIDTH
 b = SHOULDER WIDTH

TYPICAL SECTION
GRAVEL ROADS
 NOT TO SCALE

EXHIBIT 3

TOWN OF SHELBURNE – TYPICAL ROAD DESIGN STANDARDS FOR NEW DEVELOPMENTS

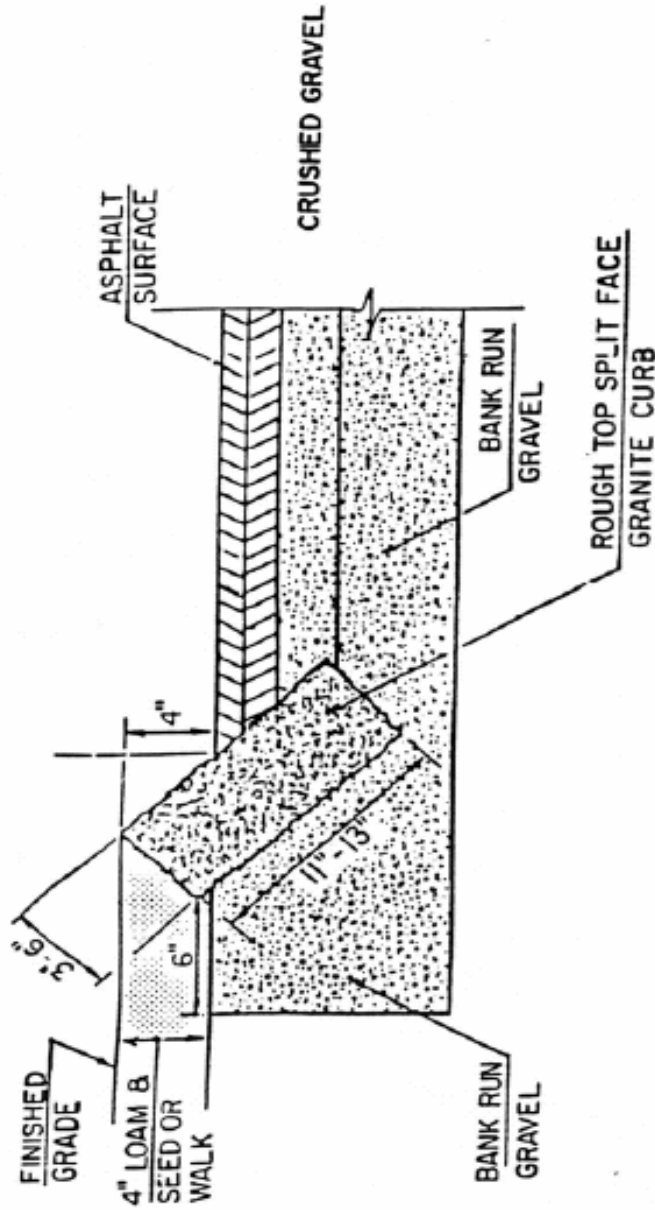


STRAIGHT - GRANITE CURB

NOT TO SCALE

EXHIBIT 4

TOWN OF SHELBURNE – TYPICAL ROAD DESIGN STANDARDS FOR NEW DEVELOPMENTS

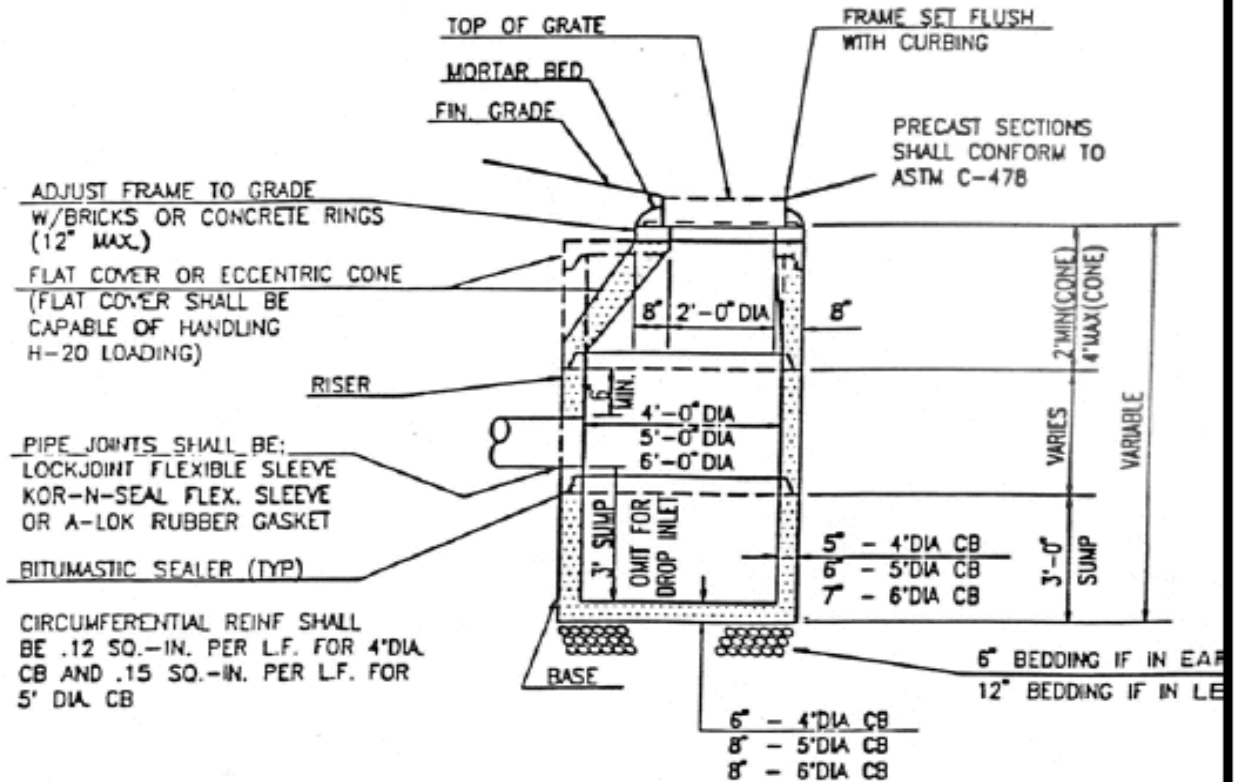
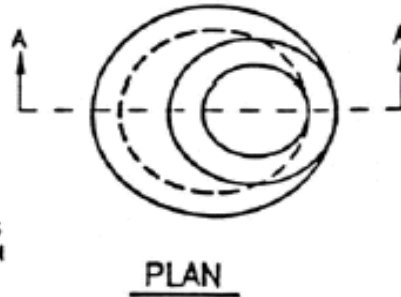


SLOPED GRANITE CURB
NOT TO SCALE

EXHIBIT 5

TOWN OF SHELBURNE – TYPICAL ROAD DESIGN STANDARDS FOR NEW DEVELOPMENTS

NOTE: MORTARED CONCRETE BLOCK MAY BE USED IN PLACE OF PRECAST CONCRETE. MORTARED CONCRETE BLOCK CATCH BASINS AND MANHOLES SHALL CONFORM TO THE NHDOT STANDARDS.



STANDARD CATCH BASIN

NOT TO SCALE

EXHIBIT 6

TOWN OF SHELBURNE – TYPICAL ROAD DESIGN STANDARDS FOR NEW DEVELOPMENTS

- GENERAL NOTES FOR MH's & CS's**
1. REINF STEEL SHALL CONFORM TO THE LATEST ASTM AIBS SPEC
 - 4" DIA SECS - 0.12 50-N/UF
 - 5" DIA SECS - 0.19 50-N/UF
 - 6" DIA SECS - 0.18 50-N/UF
 - 8" DIA SECS - 0.24 50-N/UF
 2. CONCRETE SHALL HAVE A COMPRESSIVE STRENGTH OF 4000 PSI MINIMUM
 3. DESIGN SPECIFICATIONS SHALL CONFORM TO ASTM C-478 LATEST EDITION
 4. BASE SECTIONS SHALL BE POURED MONOLITHICALLY

NOTE: MORTARED CONCRETE BLOCK MAY BE USED IN PLACE OF PRECAST CONCRETE. MORTARED CONCRETE BLOCK CATCH BASINS AND MANHOLES SHALL CONFORM TO THE HDOT STANDARDS.

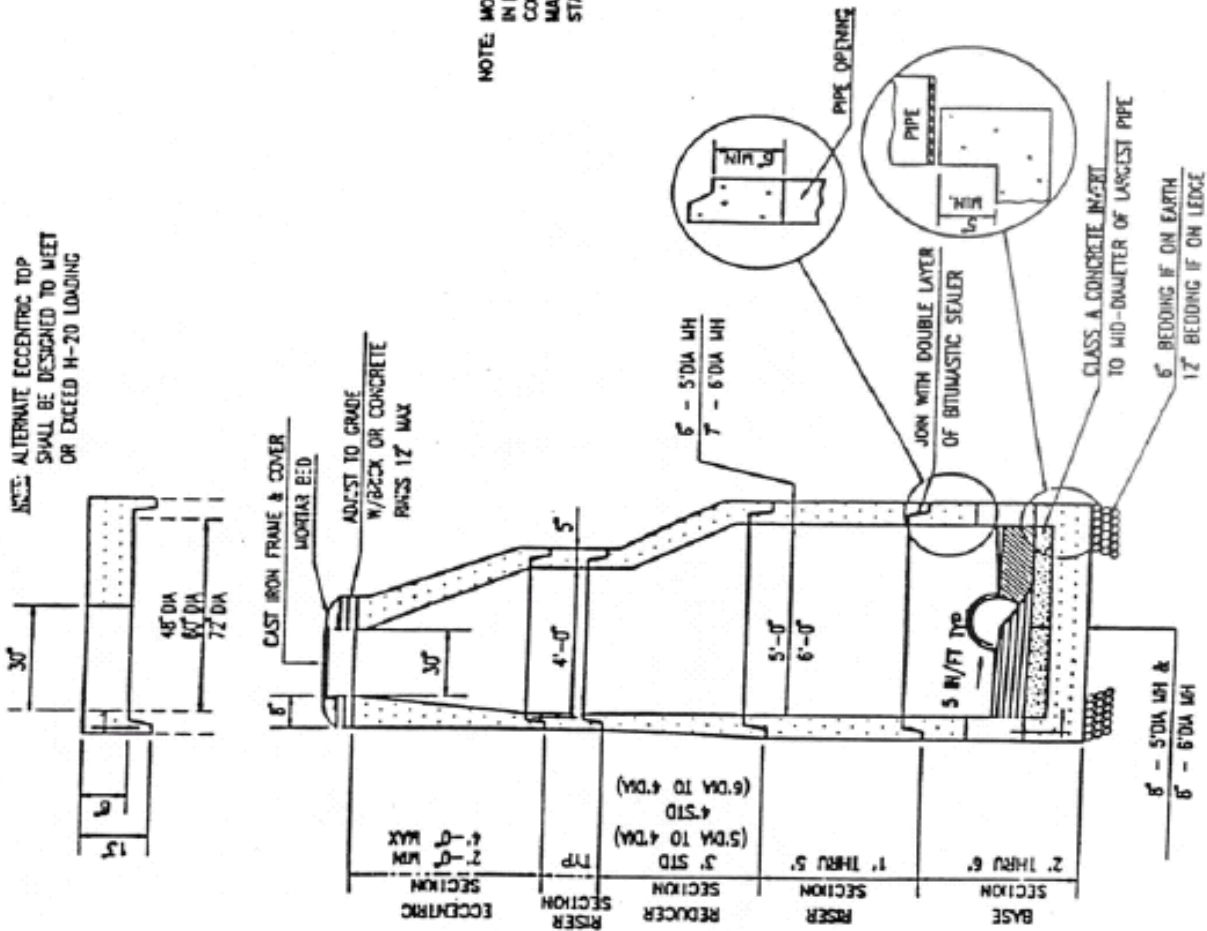
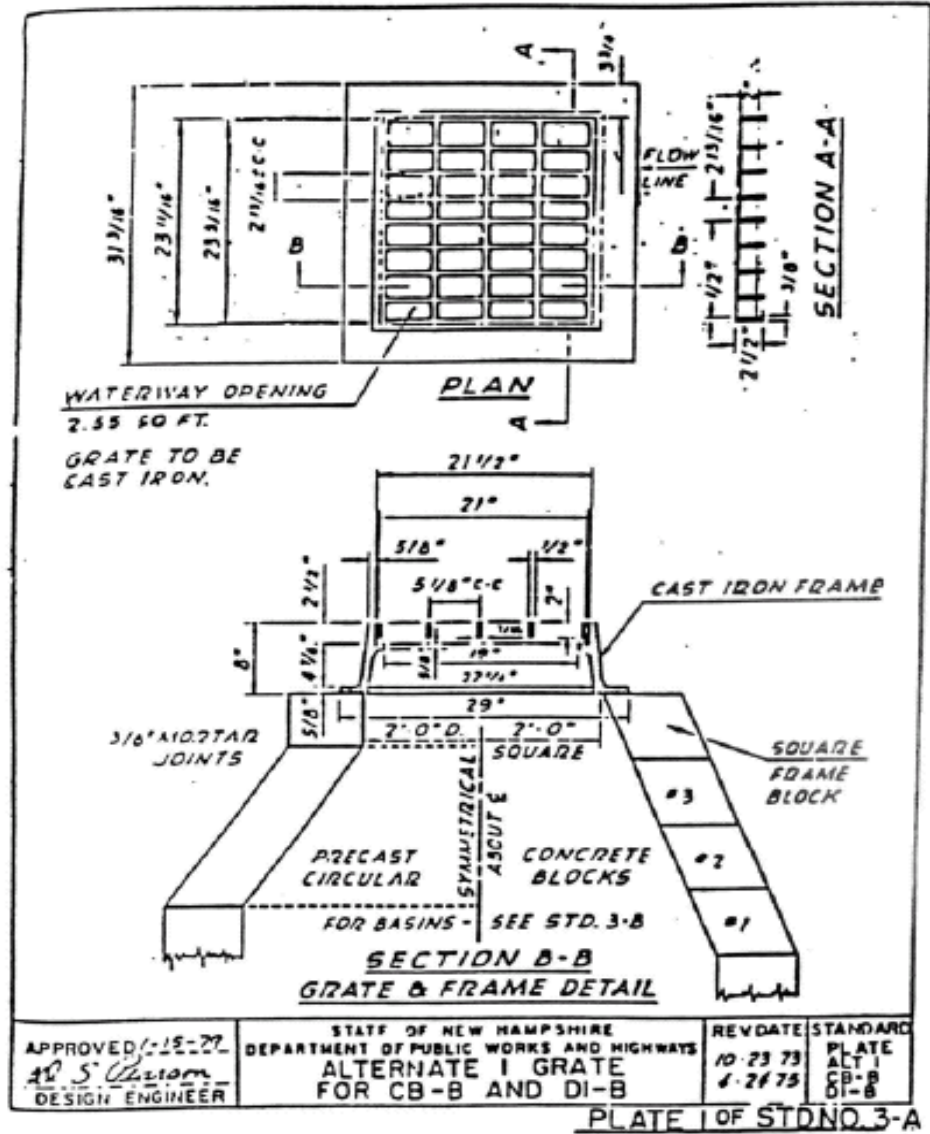


EXHIBIT 7

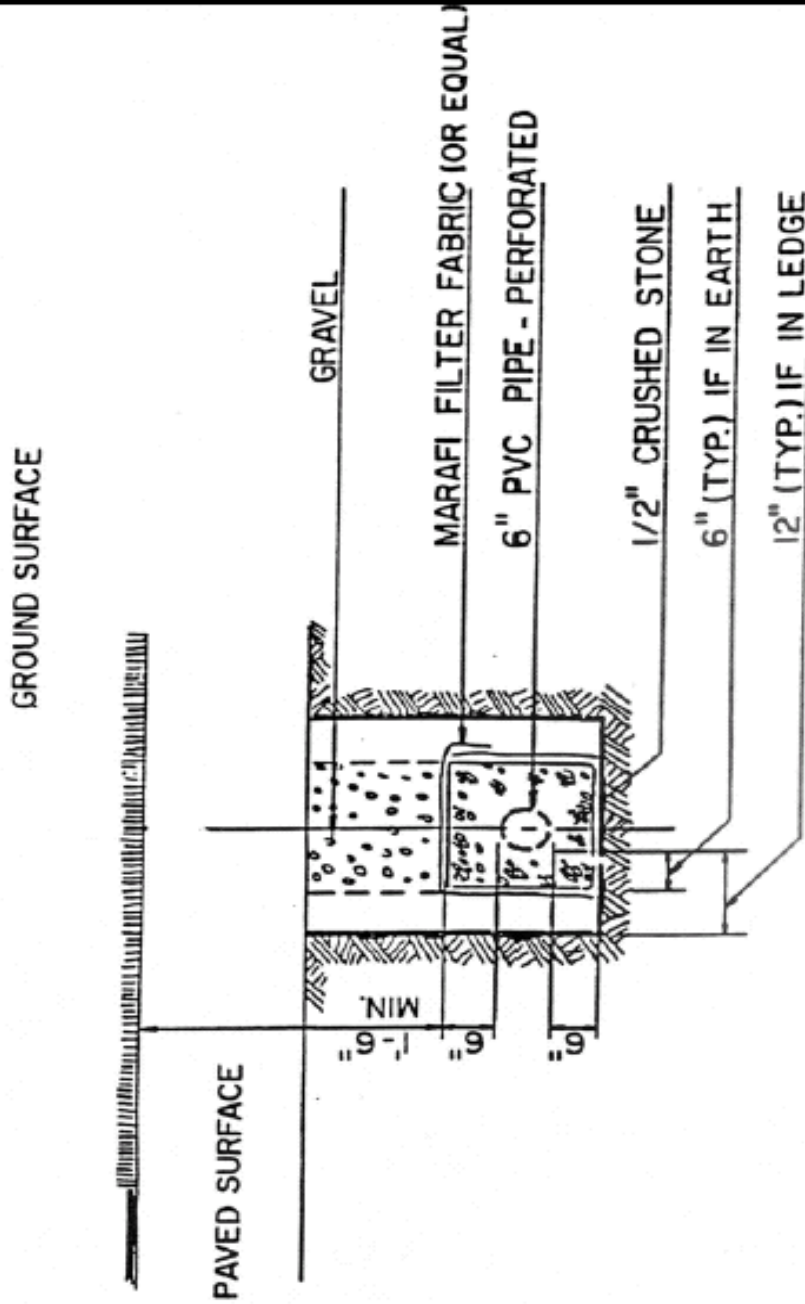
TOWN OF SHELBURNE – TYPICAL ROAD DESIGN STANDARDS FOR NEW DEVELOPMENTS



**STANDARD DRAINAGE
 GRATE & FRAME**

EXHIBIT 8

TOWN OF SHELBURNE – TYPICAL ROAD DESIGN STANDARDS FOR NEW DEVELOPMENTS



TYPICAL UNDERDRAIN DETAIL

NOT TO SCALE

EXHIBIT 9

TOWN OF SHELBURNE – TYPICAL ROAD DESIGN STANDARDS FOR NEW DEVELOPMENTS

TOTAL P. 21

SECTION 401

Table 2E – Composition of Mixtures – Master Ranges (English) (4)

	Base Courses (2)				Wearing Courses							
	Type A: 1-1/4 in. (6)		Type B: 3/4 in. (6)		Type C: 1/2 in. (6)		Type D: 3/4 in Single Course (7)		Type E: 1/2 in (6)		Type F: 3/8 in (6)	
	Min	Desired	Max	Min	Desired	Max	Min	Desired	Max	Min	Desired	Max
1-1/4 in	95	100	100									
1 in	75	85	95									
3/4 in	62	72	84	95	100	100	95	100	100	95	100	100
1/2 in	50	60	70	70	81	92	85	90	95	85	95	100
3/8 in	42	50	60	60	71	80	75	85	90	75	85	95
No. 4	28	36	45	42	50	57	38	44	50	60	66	75
No. 10	18	23	27	28	32	38	28	32	36	36	46	50
No. 20	10	15	18	16	20	24	16	20	24	24	27	32
No. 40	5	10	13	9	13	17	9	13	17	17	19	23
No. 80	1	6	9	3	7	11	3	7	11	9	11	14
No. 200	0	7	4	0	3	4	0	3	4	3	5	8
Asphalt Content: % of Mix (7)	3.8	4.3	4.8	4.8	5.25	6.0	5.0	5.4	5.8	5.5	6.0	6.5

Percentage by Weight Passing – Combined Aggregate

- (1) Gradings approaching the maximum amount permitted to pass the various sieves will result in pavement surfaces having comparatively fine texture, while gradings approaching the minimum amounts passing the various sieves will result in surfaces with comparatively coarse textures.
- (2) Alternate aggregate sizes are included to ensure that the coarse aggregate shall not be larger than one-half the thickness of the layer being placed.
- (3) The asphalt content for the above mixture is based on the use of aggregate with a specific gravity of 2.65 to 2.70. The asphalt content will be adjusted when aggregate with a higher specific gravity is used.
- (4) Reclaimed asphalt pavement (RAP) is permitted to be used in these courses.

SECTION 401

EXHIBIT 10